

Flexible, Feature-rich Messaging for Colleges and Universities

POWERING THE WORLD OF E-MESSAGING™

Mail2World's Email for Education is a feature-rich, Web-based messaging solution for universities, colleges and other higher education institutions that want reliable, affordable email communication for students, faculty and staff.

As a leading messaging and collaboration provider, Mail2World understands that the cost of delivering email services on a university campus is rising rapidly, due to an increasing demand for security, reliability and feature functionality. An education email solution also needs to integrate seamlessly into an existing university portal environment. Mail2World's Email for Education platform is a multilingual, hosted service that's easy to deploy, fully scalable and offers the lowest total cost of ownership (TCO).

- Flexible architecture enables colleges and universities to customize the interface to reflect the school's specific look and feel.
- REST and http APIs allow seamless integration into the school's community environment, so students and faculty can access their email easily without logging into a separate application.
- Faculty and staff can send announcements and e-newsletters or pre-populate shared calendars with information about events, programs and class timelines for groups of students or classes.
- Large attachments to emails, such as study group materials, curriculum guides and student rosters can save costly printing and delivery of documents or binders.
- Versatile language capabilities include a multilingual email interface, instant text translator and virtual keyboard for easy typing into other languages.
- Top navigation bar of the Webmail interface can be configured to include links to school departments and other information sources.

ADVANCED M2W EMAIL FOR EDUCATION FEATURES



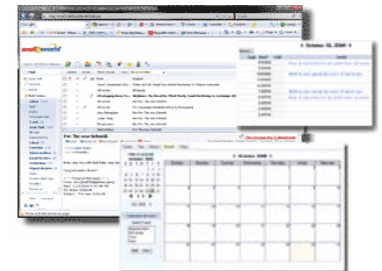
Webmail and Mobile Access

Students and faculty can access their email, contacts, calendar, notes and materials (e.g., study group notes, class presentations, videos) via the Internet from any WAP-enabled mobile phone or PC using Webmail or a desktop client like Outlook.



Customization and Integration

An extensive library of REST and http APIs provides flexible, seamless integration into alumni community portal environment (e.g., single sign-on, user create / disable / delete / rename).



Reflect Your School's Identity

Customization tools for branding your school's email include adding your school logo; creating custom skins or color schemes for sports teams, academic departments; adding custom landing pages; and personalizing the email login page and welcome page.

Shared Calendar

Students and faculty can easily schedule class or study group events that can be shared via free/busy status, viewing rights and multiple views. Calendar and task management tools include notes, alerts, reminders and options for accept, decline and undecided.

Store and Share Information

M2W MyBackpack allows students and faculty to create public folders and give access to a specific group of people. For example, teachers can create folders where students in a particular class can access course materials and share information (e.g., class notes, presentations) with a study group.

Email-to-SMS

Students and faculty can send text messages directly from their university email interface to other students' and professors' mobile devices to increase immediacy and ease of communication. Includes global coverage (450+ networks) and Unicode 16-bit support (French, Chinese, etc.).

FEATURE HIGHLIGHTS

World-class Features and Functionality

- POP3/IMAP4/SMTP for Web & mobile mail access.
- Wireless and multi-device access.
- Feature-rich HTML editor/composer and HTML message support.
- Reading pane with multiple views.
- Multilingual interface in 13 languages.
- Instant messaging translation capabilities in seven languages.
- User configurable autoresponders.

Calendar and PIM Tools

- Easy-to-use event scheduling.
- Calendar sharing with free/busy status, viewing rights and multiple views.
- Email integration with options for accept, decline and undecided
- Reminders and alerts.
- Notes and tasks.
- International time-zone support.

Contacts Manager

- Global Address Book (School Directory managed by service administrators).
- Personal Address Book.
- Address auto-complete.
- Group and mailing lists.
- Import functionality: Outlook, Eudora, Yahoo! Mail, Gmail, Thunderbird, etc.
- Printer-friendly contact lists and vCard support.

Shared Folders (MyBackpack)

- Full public sharing with permission roles and storage settings.
- Close integration with messages: Users can save attachments, attach multiple files, FTP and drag-n-drop upload.
- Image resizing and photo editing tools: Blur, Sharpen, Grayscale, Red-eye Removal, Image Cropping, Color Correction, etc.
- Filtered views for quick access: files, images, videos, audio, documents, ZIP files and programs.

Migration and Integration Services

- Experienced consultants who help colleges and universities design the right migration strategy.
- Advanced Application Programming Interfaces (http or REST APIs) for flexible front-end and back-end system integration.
- Ability to incorporate ad networks, house ads and/or private advertisers in ad rotations.

Operations and Support

- Comprehensive data migration tools to enable smooth migration of existing user data.
- Administrators are able to configure and manage extensive list of user personalization and service options.
- Extensive library of support documentation.
- Online support ticket tracking system.

Scalability, Reliability and Security

- Industry-leading reliability (99.995 percent reliability guarantee) hosted in state-of-the-art, Tier 1 data centers and managed within strict, contractual service level agreements (SLAs).
- Proven scalability that can enable messaging for tens of millions of users.
- Full daily backups with comprehensive disaster recovery plan in place.
- Complete monitoring of server functions, availability and performance, including third-party performance checks of all services (Web, SMTP, POP, IMAP, mobile) from 16 global geographic points--more than 185 distinct checks per minute.

Online Admin Control Center

- Powerful, yet simple point-and-click online Control Center with intuitive Graphical User Interface (GUI) and wide variety of comprehensive statistical reports.
- Complete provisioning control and management of routine administrative tasks, including create, modify, disable, re-enable or delete mailboxes and domains, set up group mailings lists, reserved usernames and aliases.
- Robust rules engine to manage extensive list of end-user preferences, including archive, retention policies, user restriction, feature on/off, etc.

Abundant Value-added Services

- Mobile Sync.
- Mobile Data Backup.
- Global Email-to-SMS service.
- Failsafe.

M2W Email for Education

BENEFIT HIGHLIGHTS

- Richest Webmail and mobile mail feature set in the industry, including multilingual interface and instant message translation.
- Flexible architecture with REST and http APIs that enable alumni organizations to seamlessly integrate email into the alumni's community portal and customize the interface to reflect the school's specific look and feel.
- Largest number of third-party privacy and security certifications in the industry.
- Advanced Web technologies (Web 2.0, AJAX, ASP.NET 2.0, RSS/ATOM, iCal).
- Carrier-grade vs. consumer-grade architecture and infrastructure lets Mail2World manage the email service in accordance with strict, contractual service level agreements (SLAs).
- Custom-engineered messaging platform designed to handle tens of millions of mailboxes for massive scalability and guaranteed reliability.
- Reduce costs 60-90 percent below in-house email systems. Schools can attain a lower, predictable cost structure with no capital expenditures.
- Free up IT resources to concentrate on core applications and more strategic initiatives.
- Improve student and staff satisfaction and provide collaborative communication.



Take the Next Step

For complete information about how Mail2World can create a better messaging solution for your school, visit our Web site at www.mail2world.net or call us at **888.448.6665**



Mail2World, Inc.

10960 Wilshire Boulevard, 9th Floor

Los Angeles, CA 90024

sales@mail2world.net

www.mail2world.net

ABOUT MAIL2WORLD

Mail2World delivers and supports an award-winning suite of carrier-class, Web-based, private-label messaging and collaboration services. With the richest feature set in the industry, Mail2World's customer base includes hundreds of reputable brands and prominent organizations from around the world, such as publicly-traded corporations, telecom carriers, mobile operators, and some of the most-recognized universities and online social portals.